

# \$835,900 - Penman Rd, Neptune Beach

MLS® #1025323

**\$835,900**

4 Bedroom, 3.00 Bathroom, 2,418 sqft  
Single Family Residence

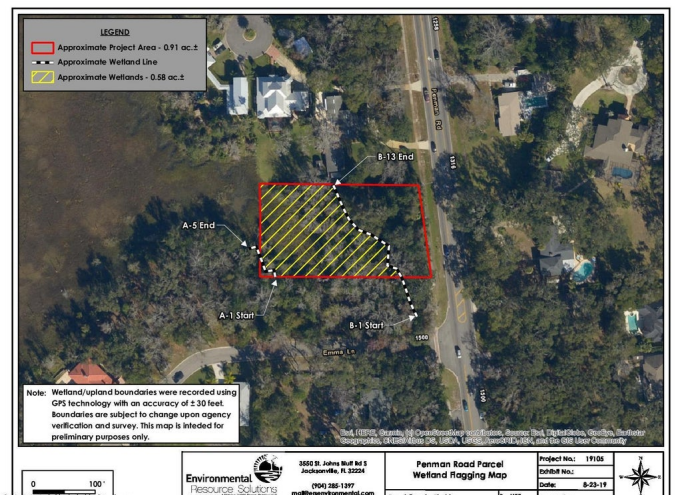
Neptune Beach, Neptune Beach, Florida

NEW construction! ONE MILE TO THE OCEAN!! Almost an acre of land situated on the quiet and tranquil Hopkins Creek! 150 ft wide by 250 ft deep marsh front lot. Enjoy Florida how it was meant to be. Fabulous sunsets, marsh views, and nature all from your peaceful backyard. Build your dream house on this gorgeous waterfront lot! Choose from one of Pinnacle Homes beautiful floor plans to design your next home, or we can customize one of your own. All homes include high ceilings & 8' doors, oversized windows, custom 42" cabinets with soft-close drawers and crown molding, quartz countertops, stainless appliances, tile flooring, deluxe master bathroom, walk-in closet, carriage lights, and comes with a full builder warranty. Photos are of model homes that includes additional options & upgrades not included in listed price. Ride your bikes to the beaches, restaurants and "A" rated schools!

Built in 2021

## Essential Information

MLS® #	1025323
Price	\$835,900
Bedrooms	4
Bathrooms	3.00
Full Baths	3
Square Footage	2,418
Year Built	2021



Type	Single Family Residence
Style	Traditional
Status	Active

### **Community Information**

Address	Penman Rd
Area	222-neptune Beach-west
Subdivision	Neptune Beach
City	Neptune Beach
County	DUVAL
State	Florida
Zip Code	32266

### **Amenities**

Utilities	Sewer - Public, Water - Public
Parking Spaces	2
Parking	Attached Garage, Driveway, Concrete
Is Waterfront	Yes
Waterfront	Intracoastal, Marsh
Pool	No Pool

### **Interior**

Interior Features	Ceiling 8+ Ft., Tile Floors, Walk-in-Closet(s)
Appliances	Dishwasher, Disposer, Microwave, Range Electric
Heating	Central Heating
Cooling	Central Cooling
# of Stories	1

### **Exterior**

Exterior	Cementitious Siding
Lot Description	Water Access, Flood Insurance Req., Marsh/Swamp
Roof	Shingle Roof
Construction	To Be Constructed, Build To Suit

### **School Information**

Elementary	Neptune Beach
Middle	Duncan Fletcher
High	Duncan Fletcher

### **Additional Information**

Days on Market	753
Zoning	Residential, Single Family
HOA Fees	0.00
HOA Fees Freq.	N/A

### **Listing Details**

Listing Office            WATSON REALTY CORP

The data relating to real estate for sale on this web site comes in part from the Internet Data Exchange (IDX) program of the Northeast Florida Multiple Listing Service, Inc. Real estate listings held by brokerage firms other than RE/MAX Specialists are marked with the listing broker's name and detailed information about such listings includes the name of the listing brokers. Information deemed reliable but not guaranteed. ©2021 Northeast Florida Multiple Listing Service, Inc. All rights reserved.

Listing information last updated on December 7th, 2021 at 7:23am EST