

\$1,399,900 - 29 Quadrille Way, Ponte Vedra Beach

MLS® #1103280

\$1,399,900

4 Bedroom, 3.00 Bathroom, 2,952 sqft
Single Family Residence

Quadrille, Ponte Vedra Beach, Florida

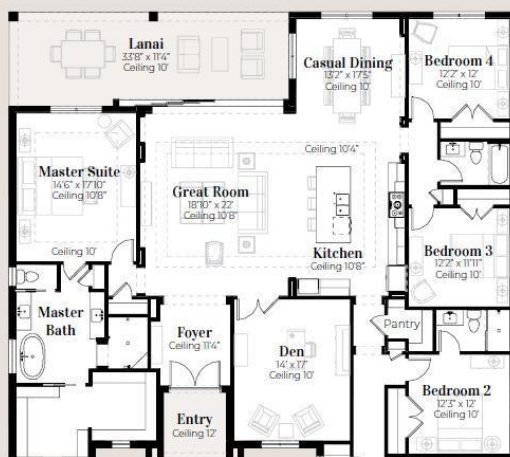
TO-BE-BUILT upon accepted contract by award-winning, luxury home builder AR Homes by Arthur Rutenberg. The luxury home neighborhood of Quadrille in Ponte Vedra Beach offers true lock and leave convenience with gated entrance and HOA managed lawn care. Located in the #1 rated St. Johns County school district. The Aberdeen is a single-story, 2,952 square foot floor plan offers the essential AR Homes open-concept living/dining/kitchen layout and an expansive 33-foot wide Lanai. Owner's Suite with enormous closet. Owner's Bath has separate vanities, garden tub and separate shower. 3 guest bedrooms on the other side of the home.

One with en-suite full bath. Large 14' by 17' Den/Office for work-from-home convenience. Choose this or any of AR Homes' 100+ fully customizable floor plans.

Built in 2021

Essential Information

MLS® #	1103280
Price	\$1,399,900
Bedrooms	4
Bathrooms	3.00
Full Baths	3
Square Footage	2,952
Year Built	2021
Type	Single Family Residence



Status Active

Community Information

Address 29 Quadrille Way
Area 252-ponte Vedra Beach-w Of A1a-n Of Solana Rd
Subdivision Quadrille
City Ponte Vedra Beach
County St. Johns
State Florida
Zip Code 32082

Amenities

Utilities Sep Irrigation Meter, Sewer - Public, Underground Util., Water - Public, Gas - Bottled
Parking Spaces 3
Pool No Pool

Interior

Interior Features Double Paned Windows, Sliding Glass Dr(s), Tile Floors, Walk-in-Closet(s)
Appliances Dishwasher, Microwave, Range Gas, Refrigerator, Self Cleaning Oven, Washer/Dryer Connect
Heating Central Heating, Electric Source
Cooling Central Cooling, Electric Source
of Stories 1

Exterior

Exterior Stucco
Exterior Features Covenants/Restrictns, Lanai, Builder Warranty
Lot Description Sidewalks, Curb & Gutter
Roof Concrete Tile Roof
Construction To Be Constructed, Build To Suit

School Information

Elementary Ponte Vedra Rawlings
Middle Alice B. Landrum
High Ponte Vedra

Additional Information

Days on Market 33

Zoning	Residential, Single Family
HOA Fees	1464.48
HOA Fees Freq.	Semi-Annual

Listing Details

Listing Office MARCUS ALLEN REALTY, LLC

The data relating to real estate for sale on this web site comes in part from the Internet Data Exchange (IDX) program of the Northeast Florida Multiple Listing Service, Inc. Real estate listings held by brokerage firms other than RE/MAX Specialists are marked with the listing broker's name and detailed information about such listings includes the name of the listing brokers. Information deemed reliable but not guaranteed. ©2021 Northeast Florida Multiple Listing Service, Inc. All rights reserved.

Listing information last updated on May 9th, 2021 at 5:38pm EDT