

\$799,000 - 113 Laurel Way, Ponte Vedra Beach

MLS® #1119814

\$799,000

3 Bedroom, 3.00 Bathroom, 2,347 sqft
Single Family Residence

The Plantation At Pv, Ponte Vedra Beach, Florida

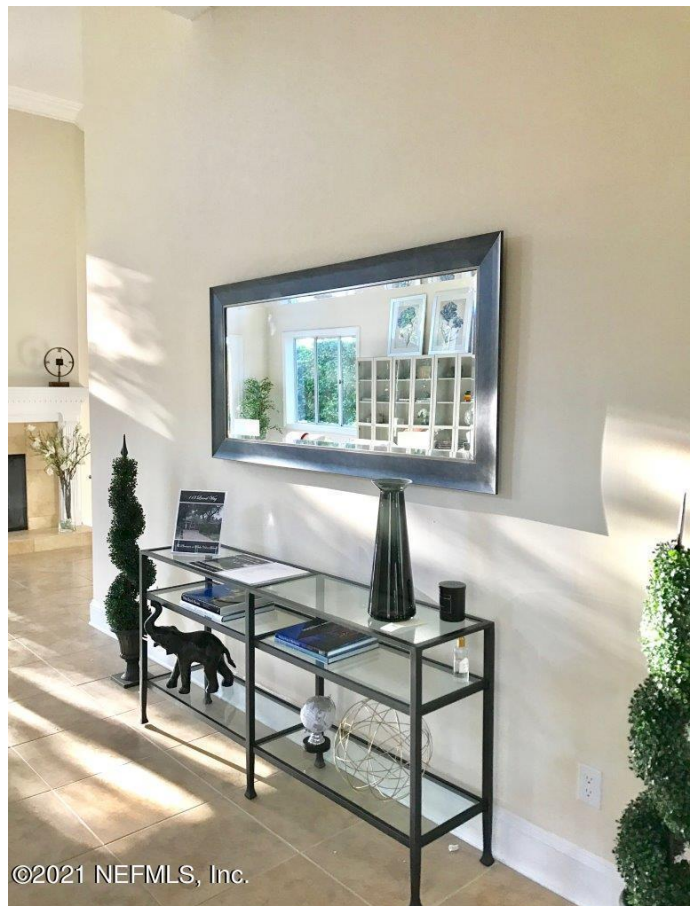
Sought after garden home in the exclusive Plantation at Ponte Vedra where owners enjoy member only benefits including golf, tennis, croquet, pickleball, club house with fitness center and a beach house overlooking the Atlantic Ocean! This one story home has 3 bedrooms and 3 baths and a private rear yard. High Ceillings and walls of windows provide for a light and bright interior. A new roof in 2016 is complemented by a paved driveway, Brazilian granite counter tops and stainless steel appliances. Lawn maintenance is included in the monthly fees. All information deemed reliable, but not guaranteed - buyer to verify all information.

Built in 1990

Essential Information

MLS® #	1119814
Price	\$799,000
Bedrooms	3
Bathrooms	3.00
Full Baths	3
Square Footage	2,347
Year Built	1990
Type	Single Family Residence
Style	Traditional, Patio Home
Status	Active

Community Information



Address	113 Laurel Way
Area	263-ponte Vedra Beach-w Of A1a-s Of Cr-210
Subdivision	The Plantation At Pv
City	Ponte Vedra Beach
County	St. Johns
State	Florida
Zip Code	32082

Amenities

Amenities	Basket Ball Court(s), Exercise Room, Playground, Tennis Court(s), Beach Access, Club Facilities, Golf Course, Security Guard, Garbage Pick-up, Yard/Lawn Maintenanc
Utilities	Gas - Bottled, Sewer - Public, Water - Public, Cable - Available, DSL Available
Parking Spaces	2
Parking	Attached Garage, Garage Door Opener, Courtyard Entry Gar
Pool	No Pool, Community Club Pool

Interior

Interior Features	Ceiling 8+ Ft., Tile Floors, Unfurnished, Walk-in-Closet(s), Window Treatment(s), Vaulted/Cath. Ceil.
Appliances	Dishwasher, Disposer, Microwave, Range Gas, Refrigerator, Washer/Dryer Connect
Heating	Central Heating
Cooling	Central Cooling
Fireplace	Yes
Fireplaces	1 Fireplace, 2 Sided Fireplace, Tile Fireplace, Frplc-Fam Rm/Den/Gr
# of Stories	1

Exterior

Exterior	Stucco
Exterior Features	Covenants/Restrictns, Mandatory Fees
Lot Description	Regular Lot
Roof	Concrete Tile Roof

School Information

Elementary	Ocean Palms
Middle	Alice B. Landrum
High	Ponte Vedra

Additional Information

Days on Market	52
Zoning	Residential, Single Family, PUD
HOA Fees	1543.00
HOA Fees Freq.	Monthly

Listing Details

Listing Office PONTE VEDRA COASTAL REALTY, INC.

The data relating to real estate for sale on this web site comes in part from the Internet Data Exchange (IDX) program of the Northeast Florida Multiple Listing Service, Inc. Real estate listings held by brokerage firms other than RE/MAX Specialists are marked with the listing broker's name and detailed information about such listings includes the name of the listing brokers. Information deemed reliable but not guaranteed. ©2021 Northeast Florida Multiple Listing Service, Inc. All rights reserved.

Listing information last updated on September 16th, 2021 at 10:53am EDT